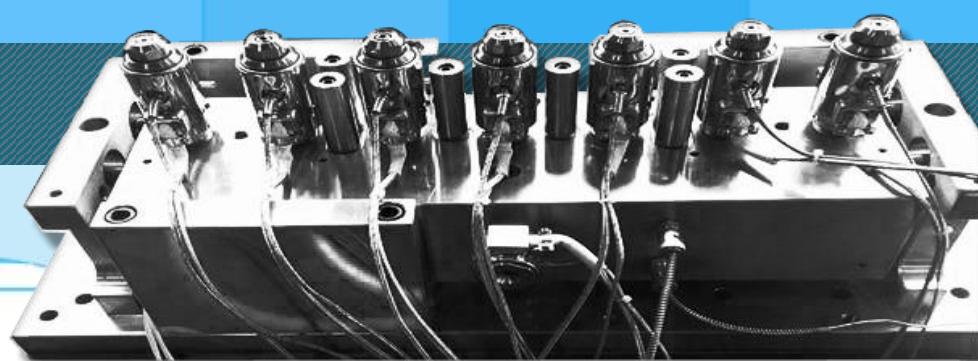


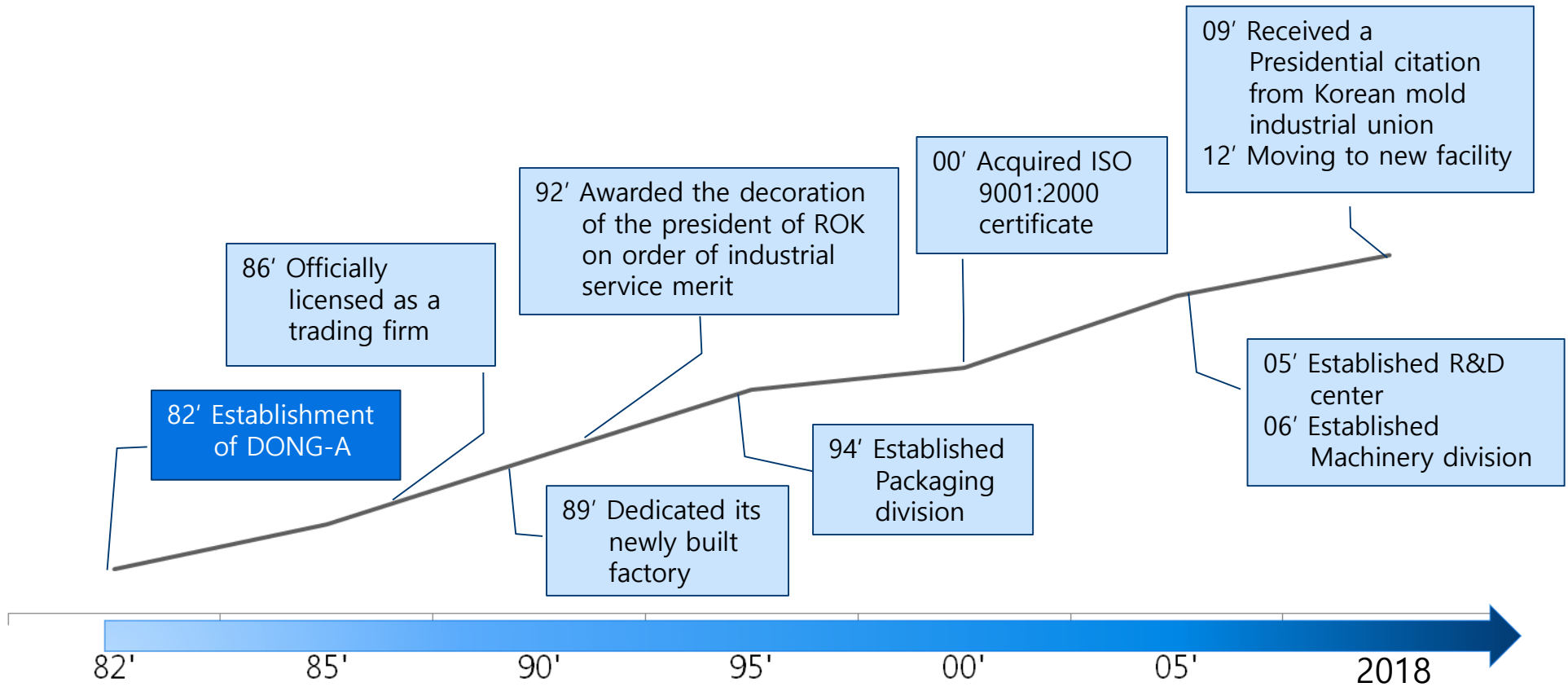


Shape your needs with *DONG-A*



General Business_36 years of History

Dong-A Precision was established in 1982 by firstly localizing ***'Injection Stretch Blow Mold'***. Through 36 years of experiences, we become the most successful injection stretch blow mold maker in Korea.



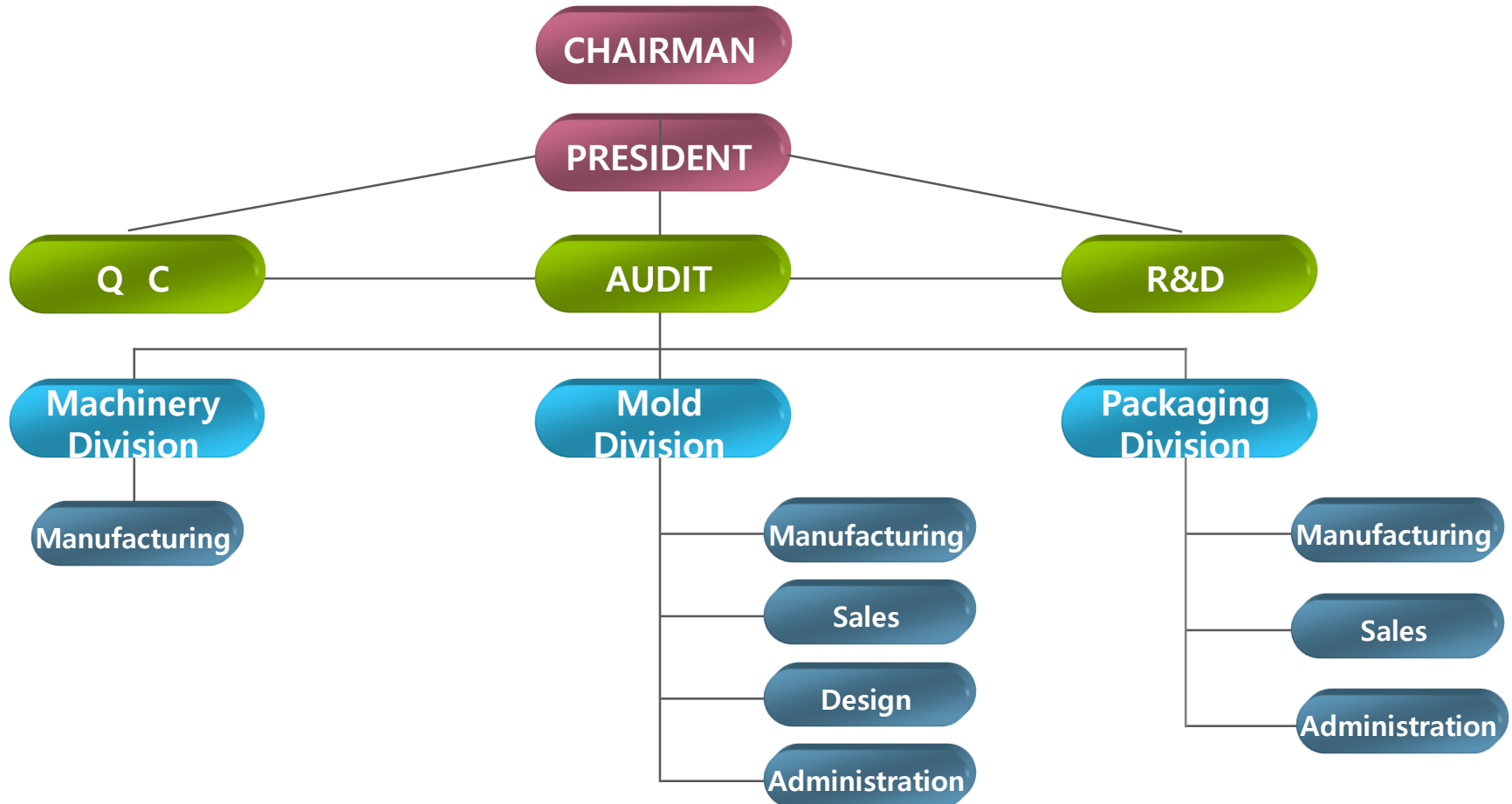
New Facility of Dong-A

The Mold and Packaging division of DONG-A Precision moved and combined into one new facility in Feb, 2012.



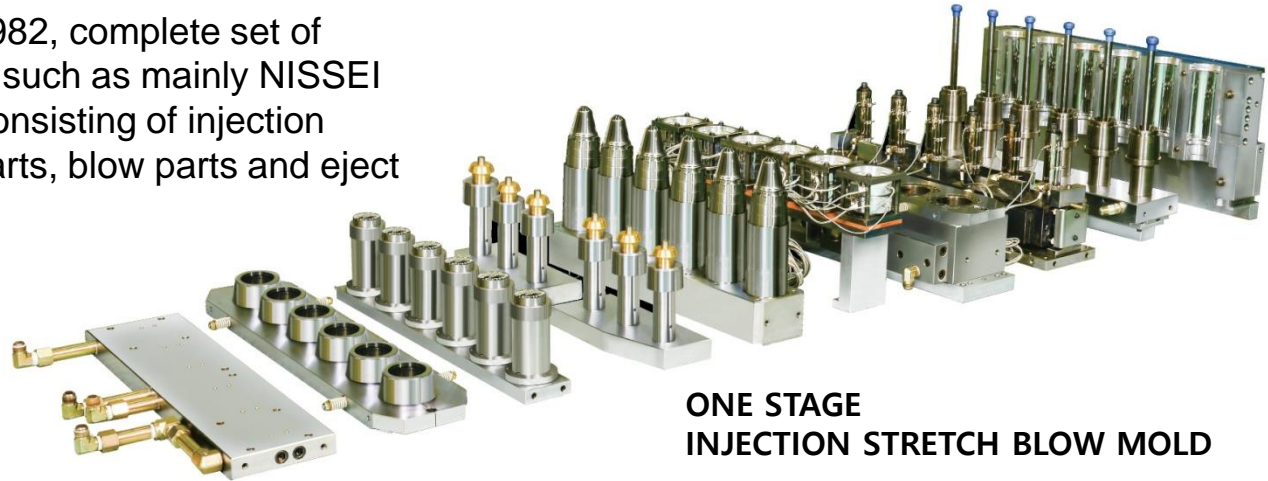
General Business_Organizational Structure

DONG-A Precision includes three different divisions such as mold, packaging, and machinery division. We are a specialized organization for injection stretch blow market.



Product Range_One Stage_Injection Stretch Blow Mold

DONG-A have supplied, since 1982, complete set of molds for single stage machines such as mainly NISSEI ASB & AOKI model, which are consisting of injection parts for preform, conditioning parts, blow parts and eject parts.



**ONE STAGE
INJECTION STRETCH BLOW MOLD**



<Injection Station>



<Conditioning Station>



<Blow Station>



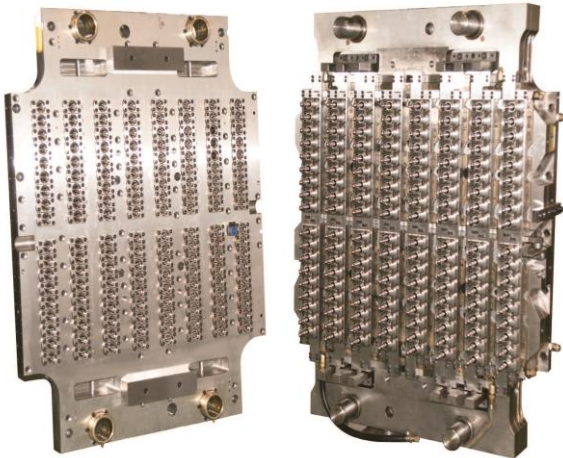
<Eject Station>

Product Range_Two Stage_Injection preform mold

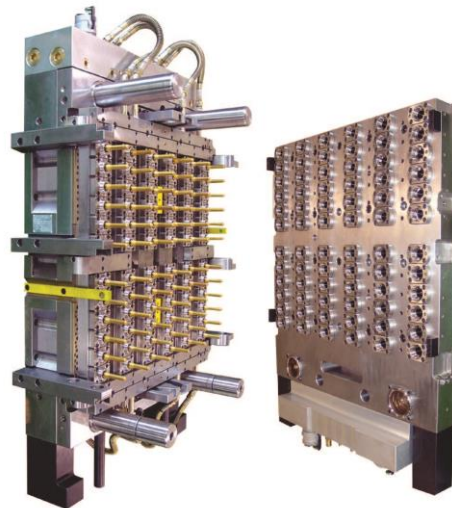
An important segment of our business is the production of PET preform mold to meet all customer's packaging needs. Since 1990, DONG-A had been manufacturing PET preform molds for TWO STAGE process. We are able to manufacture high quality preform molds in all sizes up to 144 cavities.



144 Cavities preform mold



72 Cavities preform mold



48 Cavities preform mold



Equipments

<QA equipment>

장비	spec	수량	Origin
TOP LOAD MEASURING M/C	1000 KG	1	KOREA
THREE DIMENSION MEASURING M/C (CONTACT)	600 X 900 X 550	1	U.S.A
THREE DIMENSION MEASURING M/C (NON-CONTACT)	200 X 150	1	U.S.A
Non-destructive wall thickness measurement		1	GERMANY
PROFILE PROJECTOR	150 X 60	1	U.K
HARDNESS TESTER	150 KG	1	KOREA
ULTRASONIC THICKNESS GAGE	26 XDTL	1	U.S.A
HIGH WATER PRESSURE TESTER	25 KG		KOREA
OIL PRESSURE TESTER	80 KG		KOREA
DIGIMATIC VERNIER	0~30	32	JAPAN
DIGIMATIC HEIGHT GAGE	0~600	5	JAPAN
DIGIMATIC OUTSIDE MICROMETER	0~75	3	JAPAN
DIGIMATIC DEPTH GAGE	0~200	4	JAPAN

<Manufacturing equipment>

NO	MACHINE	MODEL	SPEC	BRAND
1	NC MILLING	VM750	1500*750*800	DOOSAN
2	NC MILLING	MILAC-8A	2000*850*850	DOOSAN
3	NC MILLING	VM750	1500*750*800	DOOSAN
4	NC MILLING	SIRIUS-2	430*760*460	HWACHEON
5	NC MILLING	VM-6500	1270*670*625	DOOSAN
6	HIGH SPEED MILLING	RFM-760		RODERS
7	HIGH SPEED MILLING	RFM-600		RODERS
8	HIGH SPEED MILLING	NX-4500	600*450*400	DOOSAN
9	NC MILLING	VM750	1500*750*800	DOOSAN
10	MILLING	HMT-1000	600*450*410	NAMSUN
11	MILLING	HWVP-1100N	820*580*645	HWACHEON
12	MILLING	HWVP-1100N	820*580*645	HWACHEON
13	RADIAL	DRD-1500	1500*860*1400	DOOSAN
14	RADIAL	NRD-1600	1600*900*1400	NAMBOOK
15	DRILLING, TAPPING	R-130		ASIA
16	DRILLING, TAPPING	STD-360	520*920	SMC
17	CNC	HI-ECO21HS	280*400	HWACHEON
18	CNC	ECOSTAR-3	600*500	HWACHEON
19	CNC	PUMA GT-2100M		DOOSAN
20	CNC	HL-460	460*1000	HWACHEON
21	EDM	MT-40A	380*260*250	IHWA KOREA
22	NC EDM	ROBOFORM-31	320*220*320	CHAMILLE
23	NC EDM	ROBOFORM-200	320*220*320	CHAMILLE
24	SURFACE GRINDING	KENT	600*1500	KENT
25	SURFACE GRINDING	CGM-250	350*150*160	CHANGHAN
26	SURFACE GRINDING	KENT	600*1500	KENT
27	Lapping M/C			
28	Lapping M/C			

Trial Service

Before shipment, Mold received a full scale runoff with our tryout production facilities such as NISSEI, AOKI, HUSKY, etc under the similar production conditions to customer's.

We are doing our best to meet customer's requirements and needs.

TRIAL SERVICES



HUSKY INDEX MACHINE



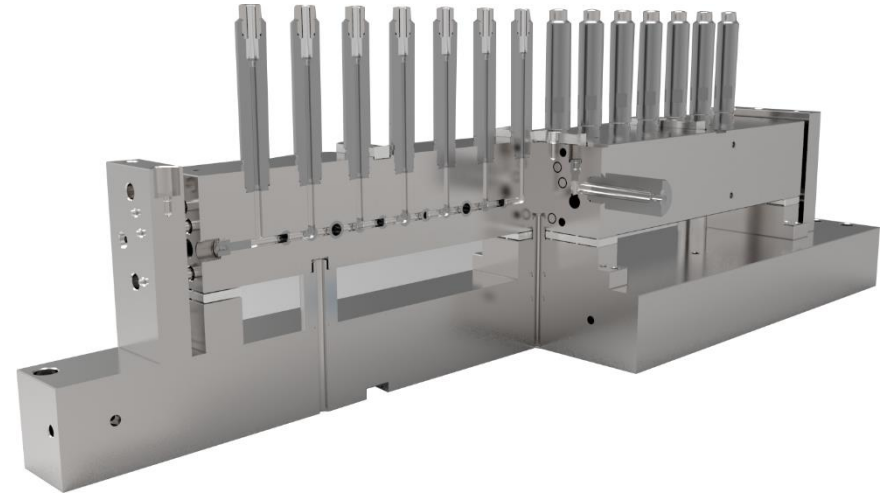
ASB 70 DPH V.4

List of Available Trial Machines

STAGE	EQUIPMENT	SPECIFICATION	Q'TY	ORIGIN
SINGLE STAGE	INJECTION STRETCH BLOW MOLDING M/C	ASB-650EXH	1	Japan
	INJECTION STRETCH BLOW MOLDING M/C	ASB-50MB	1	Japan
	INJECTION STRETCH BLOW MOLDING M/C	ASB-50H	1	Japan
	INJECTION STRETCH BLOW MOLDING M/C	ASB-70DPH	2	Japan
	INJECTION STRETCH BLOW MOLDING M/C	SBIII-500-150	2	Japan
	INJECTION STRETCH BLOW MOLDING M/C	SBIII-500LL-75	1	Japan
	INJECTION STRETCH BLOW MOLDING M/C	SBIII-350LL-40	1	Japan
	INJECTION STRETCH BLOW MOLDING M/C	SBIII-250LL-50S	2	Japan
	INJECTION STRETCH BLOW MOLDING M/C	SBIII-250LL-100	2	Japan
DOUBLE STAGE	INJECTION STRETCH BLOW MOLDING M/C	SBIII-100LL-20	1	Japan
	PREFORM INJECTION MOLDING M/C	PRO-550WD	1	S. Korea
	PREFORM INJECTION MOLDING M/C	NP-300	1	S. Korea
	PREFORM INJECTION MOLDING M/C	NS-380PET	3	S. Korea
	PREFORM INJECTION MOLDING M/C	TH350WHPET	3	S. Korea
	PREFORM INJECTION MOLDING M/C	HUSKY	1	Canada
	STRETCH BLOW MOLDING M/C	CHUM POWER	1	Taiwan
STRETCH BLOW MOLDING M/C	D&O 3600	8	S. Korea	

New Hot-Runner Development

Our newly designed Hot runner manifold improve the flow balance of the product through 'temperature uniformity' and 'runner sizing'.



End of Document



DONG-A PRECISION IND. CO., LTD

94, Saneop-ro, Ojeong-gu, Bucheon-si, Gyeonggi-do, KOREA

Tel : +82 32 680 7000

Fex : +82 32 672 7515

sales@dnolab.com

www.dnolab.com

